

# BELVOIR!

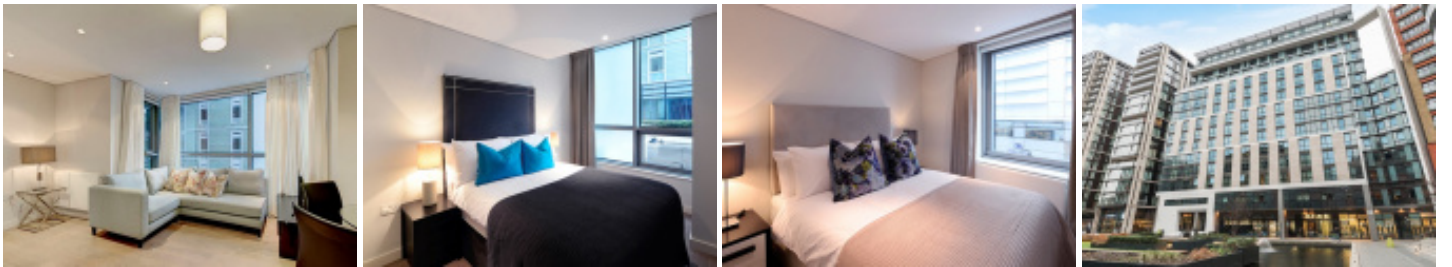
Queens Park Office  
433 Edgware Road London W2 1TH

4B Merchant Square East, London, W2

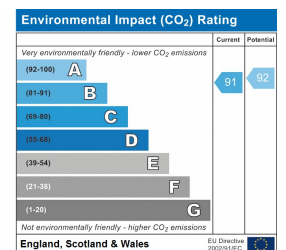
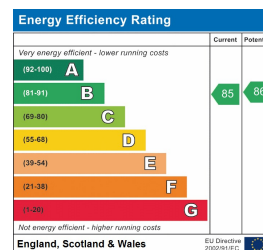


3 beds 2 baths 1 living

£1000 pw



## Key Features



Call: 0208 838 2300

[belvoir.co.uk/queens-park](http://belvoir.co.uk/queens-park)

We would like to point out that all measurements, floor plans and photographs are for guidance purposes only. If there is any point, which is of particular importance to you, please obtain professional confirmation.

## Full Description

Belvoir are pleased to present this fantastic apartment in an extremely vibrant location, in the heart of Paddington Basin area. Ideal for residents looking for Modern apartments with views of the Grand Union Canal, Gated Development & exquisite living community, in a Prime Central London Location.

This spacious interior designed three bedroom apartment is set within a modern block in the sought after Paddington Basin in W2.

This modern apartment comprises a beautiful reception room with a modern fitted open plan kitchen, three bedrooms, two bathrooms and ample storage space.

It is situated on the third floor of this prestigious building which features a concierge, lift service, CCTV and secure underground parking.

A40 is just a short drive away, while Paddington and Edgware Road Stations are within walking distance. With leafy Hyde Park, Oxford Street and Connaught Place close by and exclusive deals and discounts in gyms and exquisite restaurants offered to residents living in these outstanding modern apartments.

This prestigious waterside building benefits from private underground parking spaces, concierge service and round the clock security, as well as penthouses and apartments refurbished in a chic, contemporary style with high specification amenities and furnishings. All the apartments benefit from comfort cooling and extra ordinary living standards.

4B Merchant Square East, London, W2

