

Tollemache Close, Manston, Ramsgate



4 beds 1 bath 2 livings

£7000 pcm



Key Features

- Four bedrooms
- 3 Double Beds and 1 Single
- Lounge and Separate Dining Room
- Off Road Parking
- 20 Minute Drive to Royal St Georges
- No Smoking

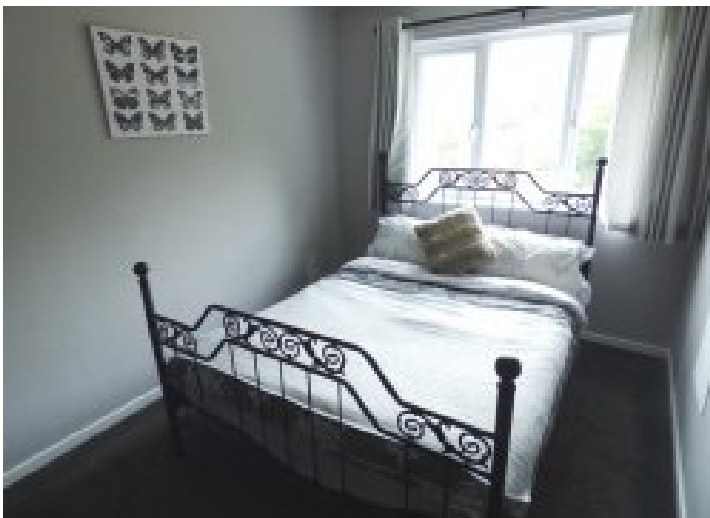
Energy Efficiency Rating		Current	Potential
Very energy efficient - lower running costs			
(92 plus)	A		
(81-91)	B		
(69-80)	C	76	76
(55-68)	D		
(39-54)	E		
(21-38)	F		
(1-20)	G		
Not energy efficient - higher running costs			
England & Wales		EU Directive 2002/91/EC	



Full Description

Looking for accommodation for the 2020 Open Championship?! Available 11th July 2020 - 20th July 2020

We are pleased to offer this 4 bedroom Semi-detached home ideally situated with easy access to Royal St Georges Golf Course in Sandwich (9.7 miles and 20 minutes by car). Internally the property has a lounge and separate diner with kitchen and breakfast room to the ground floor. To the first floor there are 3 double bedrooms, a single bedroom and a bathroom. Externally there is an enclosed rear garden with lawn and patio areas.



Tollemache Close, Manston, Ramsgate

