

Woodbine Avenue, City Centre, Leicester, LE2



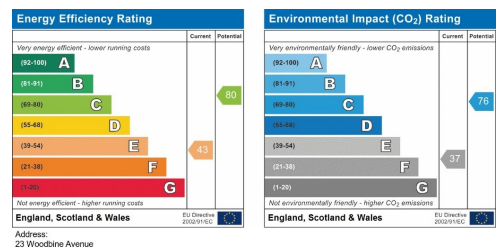
3 beds 1 bath 2 livings

£675 pcm

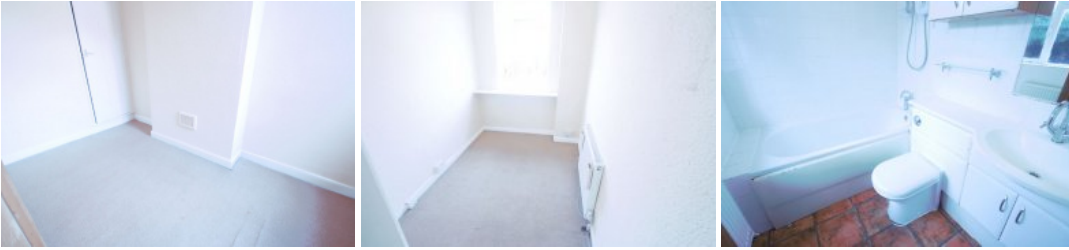


## Key Features

- Available On: 18/12/2020



## Full Description



We are proud to present this wonderful 3 bedroom terraced house just off London Road close to Train Station, City Centre and Leicester University. The property boasts 2 well presented reception rooms, fitted kitchen with a stove style gas cooker, 2 double bedrooms and 1 single in a quiet location.

### Lounge

A good sized lounge room with feature fire place and wood flooring.

### Dining room

The dining room with a gas fire and tiled flooring opens out into the kitchen.

### Kitchen

Fully fitted kitchen with fantastic stove style cooker.

### Bathroom

Pleasantly presented bathroom with a shower over bath, w/c and wash hand basin.

### Master Bedroom

Double Master Bedroom with carpets.

### Second Bedroom

Another Double Bedroom with carpets and airing cupboard.

### Third Bedroom

Single Bedroom to the rear of the property, carpeted.

### Garden

The property has a front and small rear Garden which includes a good size out house.

EPC rating: E.

Woodbine Avenue, City Centre, Leicester, LE2

