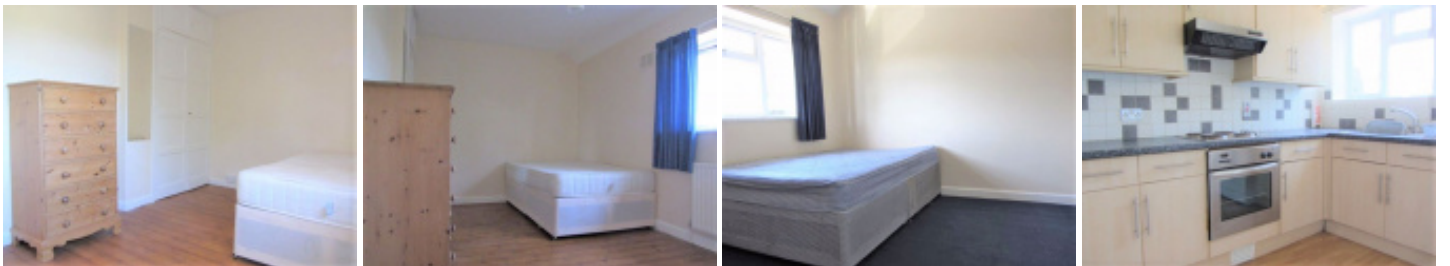


Larch Avenue.



6 beds 2 baths 2 livings

£2500 pcm



Key Features

- 6 Bedrooms
- 2 Bathrooms
- 2 Receptions
- Furnished Property
- Students accepted
- Gas C/H

Energy Efficiency Rating		Current	Potential
Very energy efficient - lower running costs			
(92 plus)	A		
(81-91)	B		
(69-80)	C		
(55-68)	D	63	73
(39-54)	E		
(21-38)	F		
(1-20)	G		
Not energy efficient - higher running costs			
England & Wales		EU Directive 2002/91/EC	



Full Description

6 Double Bedroom Furnished house with 2 Bathrooms .Students Welcome.

Entrance hall with lots of storage space.

Reception room has large double glazed sliding doors leading to the back garden with patio.

The modern kitchen has beech effect units, a laminated floor, tiled splash back, washing machine, fridge freezer and an electric hob oven.

Downstairs shower room and separate WC.

All 6 of the Bedrooms are Doubles and are furnished with Beds, wardrobes and drawers.

Main Bathroom has bath with overhead shower, sink and WC.

Double Glazed throughout. Gas Central Heating. EPC Rating D.

Driveway Parking.

.

Larch Avenue.

