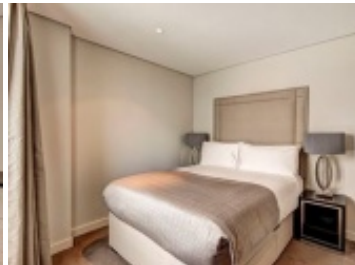
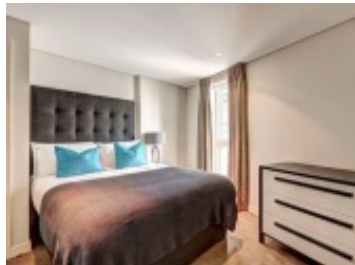


Merchant Square East, London W2

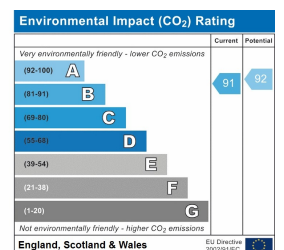
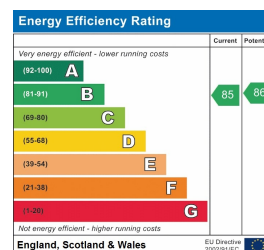


3 beds 2 baths 1 living

£1470 pw



Key Features





Full Description

This three bedroom, two bathroom, interior designed apartment is set within the heart of the Paddington Basin and close to the popular West End Quay.

The apartment is situated on the thirteenth floor of this prestigious building which features concierge, lift service and secure underground parking.

The stunning apartment comprises spacious living and entertaining space with a beautiful reception room with superb London skyline views, modern fully fitted, open plan kitchen, three bedrooms, two bathrooms and ample storage space.

The apartment offers easy access to superb transport links such as Paddington Train Station (Bakerloo, Hammersmith & City, Circle, District lines and Heathrow) Edgware Road (Circle, District and Bakerloo lines).

Merchant Square East, London W2

