

Eaton Drive, Kingston Upon Thames

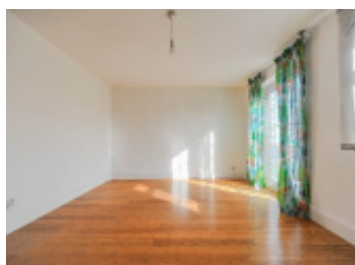


4 beds

2 baths

2 livings

£2500 pcm



Key Features

- Heating Type: Gas
- Available On: 30/05/2019

Full Description

Situated in the prestigious and highly sought after private road located just off of Kingston Hill, near Kingston Gate and Richmond Park stands this sophisticated and generously- proportioned four bedroom family townhouse.

This beautifully designed home offers accommodation over three floors with the ground floor comprising, welcoming entrance hall, stylish kitchen with all modern appliances, dining room with French doors to the rear garden.EPC:C

Eaton Drive, Kingston Upon Thames

