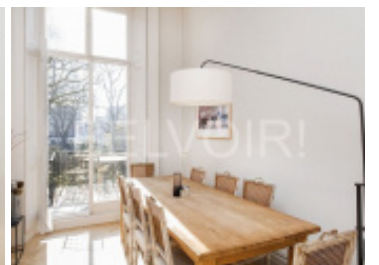
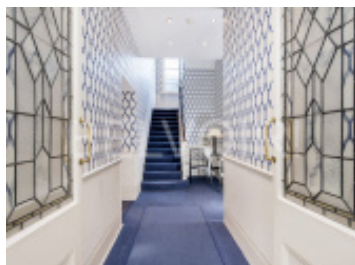


Onslow Gardens SW7



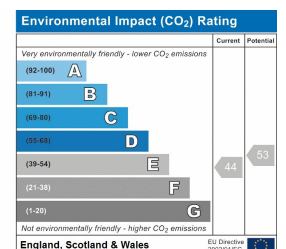
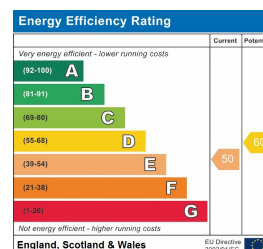
3 beds 1 bath 1 living

£5750 pcm



Key Features

- 3 Bedroom Flat with Balcony
- Spacious Living Room
- High Ceilings
- Superb Location off Fulham Road
- Close to South Kensington Tube
- Available End of March 2019





Full Description

A three bedroom unfurnished balcony flat on the first floor of this attractive stucco fronted building. The property occupies over 1088 square feet (102 sqm) and comprises two double bedrooms plus one single bedroom, spacious lounge dining room, fitted kitchen with appliances, one en-suite shower room and family bathroom. The flat also features a balcony overlooking the delightful Onslow Square.

The property is situated in this prestigious location, a picturesque street with excellent access to the cafes and restaurants available within the South Kensington Piazza. The flat is only 0.3 miles walk to South Kensington underground station (Piccadilly Line) and a shorter distance to Fulham Road with its boutique shopping, restaurants, cafes and bars. The nearest schools are The Royal Marsden School, the Oratory Roman Catholic Primary School and Eaton Square School.

The flat is available at the end of March 2019.

BELVOIR!

London Westminster Office
231 Vauxhall Bridge Road London SW1V 1AD



Call: 020 7834 4901

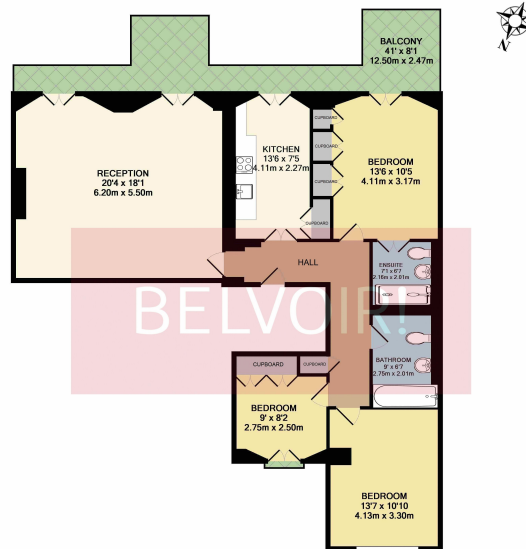
belvoir.co.uk/london-westminster

We would like to point out that all measurements, floor plans and photographs are for guidance purposes only. If there is any point, which is of particular importance to you, please obtain professional confirmation.

BELVOIR!

London Westminster Office
231 Vauxhall Bridge Road London SW1V 1AD

Onslow Gardens SW7



TOTAL APPROX. FLOOR AREA 1087 SQ. FT. (101.0 SQ. M.)
GA measurements are approximate. Not to scale. Illustrative purposes only. Not for valuation.

Call: 020 7834 4901

belvoir.co.uk/london-westminster

We would like to point out that all measurements, floor plans and photographs are for guidance purposes only. If there is any point, which is of particular importance to you, please obtain professional confirmation.