

Drum Close, Allestree



2 beds 1 living

£675 pcm

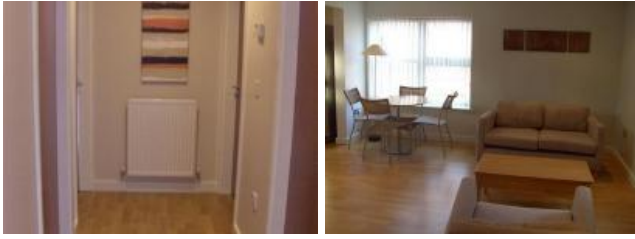


Key Features

- Allestree
- Apartment
- Furnished Property
- Garage Parking
- 2 Bedrooms
- 1 Reception

Energy Efficiency Rating		Current	Potential
Very energy efficient - lower running costs			
92-100	A		
81-91	B		
69-80	C	80	84
55-68	D		
39-54	E		
21-38	F		
1-20	G		
Not energy efficient - higher running costs			
England & Wales		Directive 2002/91/EC	

Full Description



Belvoir Lettings are pleased to offer a two double bedroom, penthouse apartment in the sought after location of Allestree. The property is in a modern apartment block with fully secure, video intercom system and has excellent links into the centre of Derby but also onto the A38 for access to the north and south.

*** LUXURY & STYLE ***

Belvoir Lettings are pleased to offer a two double bedroom, penthouse apartment in the sought after location of Allestree. The property is in a modern apartment block with fully secure, video intercom system and has excellent links into the centre of Derby but also onto the A38 for access to the north and south.

The apartment is on the top floor and offers fantastic accommodation throughout, with high quality furniture and a very high spec finish. Impressive double doors lead you into a dual aspect living/dining area that is extremely light and airy, with ample space for the 4-seater dining table, 2 piece suite and other furniture. The kitchen is a very good size and finished to an excellent standard, with full height fridge/freezer, integrated dishwasher and washer/dryer. It comes fully equipped to include toaster, microwave, kettle, crockery, utensils and so on.

The master bedroom is a large double with built in mirrored wardrobes and a lovely ensuite with a double shower. The second bedroom is also a double and again comes fully furnished. The main bathroom is a very good size and is finished to the same excellent standard as the rest of the apartment, with a modern suite including a bath with shower attachment.

In addition to superb accommodation, this apartment also offers a garage as secure parking, double glazing and gas central heating throughout.

Turn of the A38 signposted Allestree, take the turnoff sign Allestree (Kings Croft Road) and IMMEDIATELY turn left onto Kings Croft/Devonshire Avenue. At the mini roundabout turn left onto Baslow Drive and then right onto Drum Close. As you turn onto Drum Close the apartment block is on your left with the garages around the back.

Upon applying for a property, there are application fees to be paid. This covers tenant referencing, credit checks, drawing up the tenancy agreement, and carrying out the inventory/schedule of condition.

Our fees to apply for this property are £250 (including VAT) for a single person application with a fee of £50 (including VAT) for any additional tenant(s) over the age of 18 years of age. A single guarantor application is chargeable at a cost of £50 (including VAT). These fees are non-refundable.

Payment of these fees is required upon applying for the property. In addition, prior to moving into the property you will need to pay:-

1) The first month's rent

2) The bond/deposit, usually equating one months rent +£100.

The deposit/bond will be held by the DPS (Deposit Protection Service) for the duration of your tenancy.

PLEASE NOTE: Elder and Twells DO NOT charge any additional fees for tenancies continuing on a rolling contract after the initial 6 month term.

KIPOD Ltd trading as Belvoir! Derby West are licensed members of NALS (National Approved Letting Scheme) and are covered under their Client Money Protection Scheme. Our redress scheme is The Property Ombudsman Ltd, Milford House, 43-55 Milford Street, Salisbury, Wiltshire, SP1 2BP

Drum Close, Allestree

