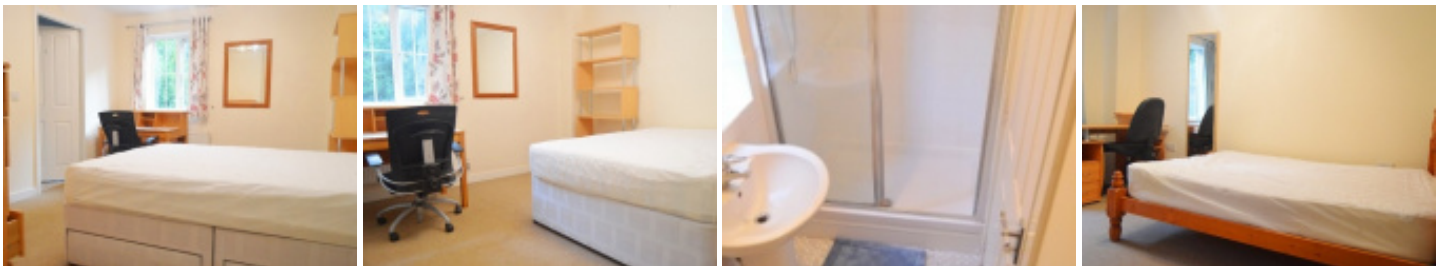


## Valley View, Newcastle, Newcastle-Under-Lyme



6 beds 3 baths 1 living

£2361 pcm



### Key Features

- Student Let
- 3 Bathrooms
- Large Kitchen / Diner
- Conservatory
- Gas Central Heating
- Driveway Parking

Energy Efficiency Rating		Current	Potential
Very energy efficient - lower running costs			
(92-100)	A		
(81-91)	B		
(69-80)	C		
(55-68)	D		
(39-54)	E		
(21-38)	F		
(1-20)	G		
Not energy efficient - higher running costs			
		79	82
England, Scotland & Wales			
EU Directive 2002/91/EC			

## Full Description



**\*\*\*STUDENTS\*\*\* BILLS INCLUDED(gas, water, electricity included subject to a fair usage allowance)**

A very nice 3 storey, 3 bathroom, 6 Bedroom property in a great location just a few minutes walk to Newcastle town centre where you will find supermarkets, cinema, bars, restaurants and the bus station. Easy access to Keele University. Short term tenancy until 31st July 2019

The ground floor has a very large kitchen diner with fitted units, oven, hob, washer, fridge freezer and dishwasher, large dining table with chairs.

Conservatory with sofas.

Downstairs bedroom is a double bedroom with bed, wardrobe and desk.

Groundfloor shower and toilet.

To the first floor, there is a very large room to the rear, with bed, desk, and clothes storage. The front bedroom is an ensuite with shower and toilet, fitted wardrobes, bed and desk.

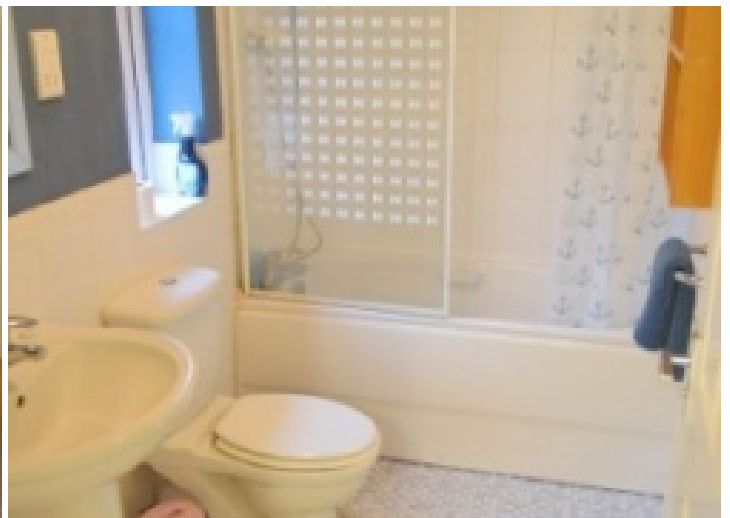
To the 2nd floor there are 3 more bedrooms, the front is a double with fitted wardrobes, bed and desk, both of the rear bedrooms come with wardrobe space and both have bed and desk.

There is a main bathroom to the 2nd floor with bath, shower, toilet and sink.

Whilst the details listed within this description are believed to be accurate and upto date you should check with the agent that any appliances listed will be present at the start of the let. Where a property is let unfurnished, should an appliance become faulty the landlord may not replace it - excluding cookers & boilers for which the landlord remains responsible. In some instances gas fires may have been disconnected where central heating systems are present.

# BELVOIR!

Newcastle-under-Lyme Office  
489 Hartshill Road, Hartshill Stoke-on-Trent  
Staffordshire ST4 6AA



Call: 01782 662929

[belvoir.co.uk/newcastle-under-lyme](http://belvoir.co.uk/newcastle-under-lyme)

We would like to point out that all measurements, floor plans and photographs are for guidance purposes only. If there is any point, which is of particular importance to you, please obtain professional confirmation.

## Valley View, Newcastle, Newcastle-Under-Lyme

