

BELVOIR!

Belvoir Cannock
15 Wolverhampton Road Cannock Staffordshire WS11 1AP

Wolverhampton Road, Cheslyn Hay, Walsall



Offers in the region of £425,000



Bedrooms : 4

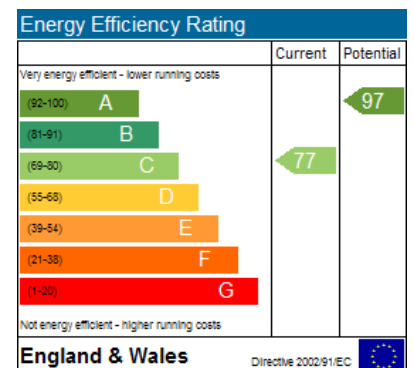
Bathrooms : 3

Receptions : 2

Style : Detached

Key Features

- Four bedrooms
- Immaculately presented
- Character property
- Enclosed rear garden
- En suite to master
- Jack and Jill en suite



Call: 01543886801

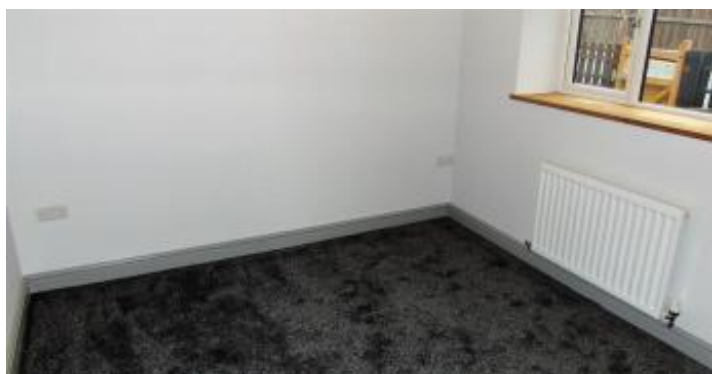
belvoir.co.uk/cannock

Full Description



We are truly delighted to present this wonderful four bedroom character home in a popular location in Cheslyn Hay. The property sits close to local amenities and schools whilst boasting a fleet of individual features. Briefly benefiting from: Entrance hallway, lounge, office room, kitchen/dining area, four bedrooms, Jack and Jill en suite, en suite to master, family bathroom, immaculate rear garden and plentiful parking. A must view for any family.

Entrance Hallway Having a Upvc double glazed door and window to front aspect, Upvc double glazed window to side aspect, ceiling spotlights, exposed ceiling timbers, loft access, under stairs storage cupboard, stairs to first floor accommodation and radiator. Lounge 4.55m x 6.32m (14'11 x 20'09) An ideal room for entertainment, the light and spacious lounge benefits from Upvc double glazed French doors and windows to front aspect, exposed ceiling timbers, ceiling spotlights and two radiators. Office Room 2.08m x 2.13m (6'10 x 7'00) With radiator, power points and telephone/internet socket. Kitchen Diner 7.62m x 3.78m (25'00 x 12'05) Kitchen area: A high quality modern kitchen with a range of styl...



BELVOIR!

Cannock Office

15 Wolverhampton Road Cannock Staffordshire WS11 1AP

Wolverhampton Road, Cheslyn Hay, Walsall



• FREE Property Appraisal

• Tenant Find

• Property Insurances

• Full Management

• Buy to Let

• Rent Protection

• Inventories

• Accompanied Viewings

• Legal Protection

• Inspections

• Fully Referenced

• Exclusive Website Coverage

Call: 01543886801

belvoir.co.uk/cannock